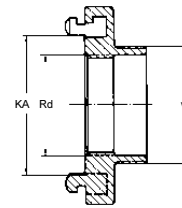


Festkupplungen mit metallischer Dichtfläche
Adapters with metal sealing surface



Gewinde: DIN ISO 228
 Rundgewinde: DIN 405

Thread: DIN ISO 228
 Round thread: DIN 405



Aluminium light alloy	Messing copper alloy	Edelstahl stainless steel
--------------------------	-------------------------	------------------------------

Storz Size	KA (mm) Lug	Rund-Innen Rd female	AG (w) Male	IG (w) Female	Bemerkung Remark	Weight (kg)	Ident-No.	Euro
52-C	66	50 x 1/6	2 "		DIN 14 317	0,23	25-066200-10	
			2 "			0,77	25-066200-30	
65	81	60 x 1/6	2 "			0,33	25-081200-10	
			2½ "			0,37	25-081250-10	
			3 "		NEN 33 74	0,36	25-081300-10	
			3 "			1,10	25-081300-30	
				2 "	IG / female	0,37	26-081200-10	
				2½ "	IG / female	0,39	26-081250-10	
				2½ "	IG / female	1,19	26-081250-30	
				3 "	IG / female	0,39	26-081300-10	
75-B	89	65 x 1/6	2½ "		DIN 14 318	0,39	25-089250-10	
				2½ "	IG / female	0,44	26-089250-10	
110-A	133	105 x 1/4	4 "		DIN 14 319	1,01	25-133400-10	